

WATTS SERIES 007 DOUBLE CHECK VALVE ASSEMBLIES

Series 007

Double Check Valve Assemblies

Sizes: 1/2" – 2"

Series 007 Double Check Valve Assemblies are designed to protect drinking water supplies from dangerous cross-connections in accordance with national plumbing codes and water authority requirements for non-potable service applications such as irrigation, fireline, or industrial processing. Only those cross-connections identified by local inspection authorities as non-health hazard shall be allowed the use of an approved double check valve assembly.

Check with local authority having jurisdiction regarding vertical orientation, frequency of testing or other installation requirements.

Check with local authority having jurisdiction regarding vertical orientation, frequency of testing or other installation requirements. The valve shall meet the requirements of ASSE Std. 1015 and AWWA Std. C510. Approved by the Foundation for Cross-Connection Control and Hydraulic Research at the University of Southern California.

Features

- Ease of maintenance — only one cover
- Top entry
- Replaceable seats and seat discs
- Modular construction
- Compact design
- Cast bronze body construction — 1/2" – 2"
- Top mounted ball valve test cocks
- Low pressure drop
- No special tools required for servicing
- 1/2" – 1" have tee handles

Specifications

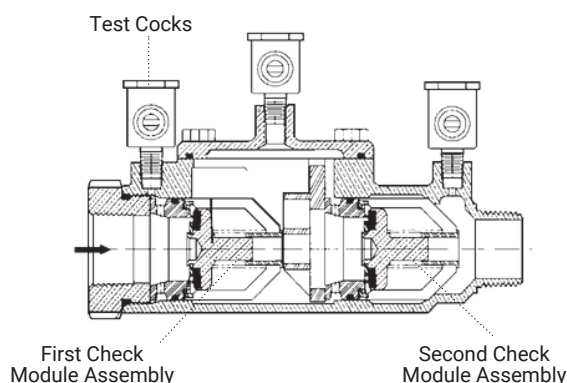
A Double Check Valve Assembly shall be installed at each noted location. The assembly shall consist of two positive seating check modules with captured springs and rubber seat discs. The check module seats and seat discs shall be replaceable. Service of all internal components shall be through a single bronze or stainless steel access cover secured with stainless steel bolts. The assembly shall also include two resilient seated isolation valves; four top mounted, resilient seated test cocks. The assembly shall meet the requirements of ASSE Std. 1015 and AWWA Std. C510. Approved by the Foundation for Cross-Connection Control and Hydraulic Research at the University of Southern California. Assembly shall be a Watts Series 007.



1" 007M1QT



1" 007M1QT-S



The 007 Series features a modular design concept which facilitates complete maintenance and assembly by retaining the spring load.

Now Available

WattsBox Insulated Enclosures.

For more information, send for literature ES-WB.

NOTICE

Inquire with governing authorities for local installation requirements

Watts product specifications in U.S. customary units and metric are approximate and are provided for reference only. For precise measurements, please contact Watts Technical Service. Watts reserves the right to change or modify product design, construction, specifications, or materials without prior notice and without incurring any obligation to make such changes and modifications on Watts products previously or subsequently sold.



WATTS SERIES 007 DOUBLE CHECK VALVE ASSEMBLIES

Pressure – Temperature

1/2" – 2"

Temperature Range: 33°F – 194°F (0.5°C – 90°C).

Maximum Working Pressure: 203psi (14ba r).

Standards

ASSE Std. 1015, AWWA Std. C510

IAPMO

AS/NZS 2845.1

PS31, CSA B64.5

Approvals

† ASSE, AWWA, IAPMO, CSA, UPC, WaterMark

▲ Approved by the Foundation for Cross-Connection Control and Hydraulic Research at the University of Southern California.

• Models LF and S are not listed.

◆ UL

WaterMark applicable to A+NZ model

Classified (LF models only) 3/4" – 2"

(except 007M3LF)

* Horizontal and vertical "flow up" approval on all sizes

Suffix:

S - bronze strainer

LF - without shutoff valves

SH - stainless steel ball valve handles

HC - 2 1/2" inlet/outlet fire hydrant fittings (2" valve)

Prefix:

U - Union connections

Material

1/2" - 2"

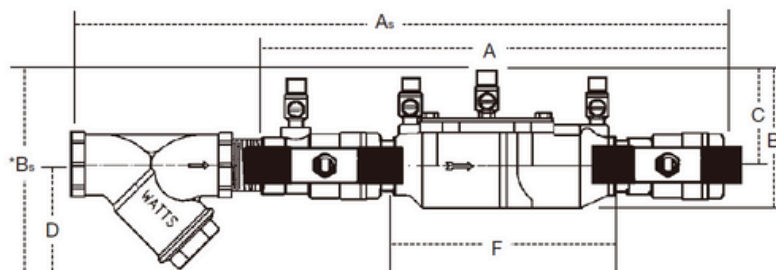
Bronze body construction, silicon rubber disc construction material in the first and second checks.

Replaceable polymer check seats for first and second checks. Stainless steel cover bolts. A+NZ models in DR brass, with BSP body connections.

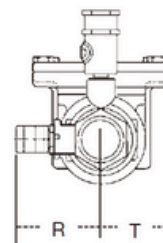
Dimensions - Weights

Models

Sizes 1/2" - 2"



*Subscript 'S' = strainer model

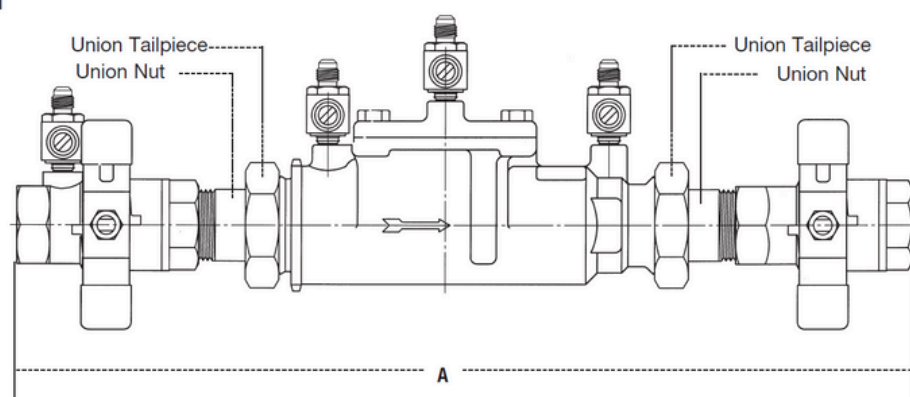


MODEL	SIZE	DIMENSIONS														WEIGHT			
		A		B		C		D		F		G		R		T			
		in.	mm	in.	mm	in.	mm	in.	mm	in.	mm	in.	mm	in.	mm	in.	mm	lbs.	kgs.
▲ 007QT	1/2	10	254	4 1/8	117	2 1/16	62	—	—	5	127	3 3/8	85	2 5/16	59	2 1/16	52	4.5	2
▲ 007M3QT	3/4	11 1/8	282	4	102	3 1/8	79	—	—	6 3/16	157	3 1/16	87	2 1/8	54	1 5/16	33	5	2.3
▲ 007M1QT	1	13 3/4	337	5 1/8	130	4	102	—	—	7 1/2	191	3 3/8	85	1 11/16	43	1 1/16	43	12	5.4
▲ 007M2QT	1 1/4	16 3/8	416	5	127	3 5/16	84	—	—	9 1/2	241	5	127	3	76	2	50	15	6.8
▲ 007M2QT	1 1/2	16 3/4	425	4 7/8	124	3 1/2	89	—	—	9 3/4	248	5 13/16	148	3 1/8	79	2 1/16	68	15.9	7.2
▲ 007M1QT	2	19 1/2	495	6 1/4	159	4	102	—	—	13 3/8	340	6 1/8	156	3 7/16	87	2 1/16	68	25.7	11.7
• 007QT-S	1/2	13	330	6	152	2 1/16	62	3	76	5	127	3 3/8	85	2 5/16	59	2 1/16	52	5.5	2.5
• 007M3QT-S	3/4	14 1/2	368	6 1/8	156	3 1/8	79	3	76	6 3/16	157	3 1/16	87	2 1/8	54	1 5/16	33	6.7	3.1
• 007M1QT-S	1	17 3/16	457	7 3/4	197	4	102	3 1/4	83	7 1/2	191	3 3/8	85	1 11/16	43	1 1/16	43	14	6.4
• 007M2QT-S	1 1/4	21 1/2	546	7 1/16	179	3 5/16	84	3 1/2	83	9 1/2	241	5	127	3	76	2	50	19	8.6
• 007M2QT-S	1 1/2	25 1/16	637	7 1/16	179	3 1/2	89	3 3/4	95	9 3/4	248	5 13/16	148	3 1/8	79	2 1/16	68	19.6	8.9
• 007M1QT-S	2	27 1/4	692	8 3/4	222	4	102	4	102	13 3/8	340	6 1/8	156	3 7/16	87	2 1/16	68	33.5	15.2

Suffix HC — Fire Hydrant Fittings dimension "A" = 23 1/2" (594mm)

WATTS SERIES 007 DOUBLE CHECK VALVE ASSEMBLIES

1" U007M1QT



Sizes: 1/2" – 2"

MODEL	SIZE	DIMENSIONS	
		A	
	in.	in.	mm
U007QT	1/2	12 ¹³ / ₁₆	326
U007M2QT	3/4	13 ¹³ / ₁₆	350
U007M2QT	1	16 ⁵ / ₁₆	422
U007M2QT	1 1/4	20 ³ / ₄	527
U007M2QT	1 1/2	21 1/2	546
U007M1QT	2	24 1/2	622

WATTS SERIES 007 DOUBLE CHECK VALVE ASSEMBLIES

Capacity

As compiled from documented Foundation for Cross-Connection Control and Hydraulic Research at the University of Southern California lab tests.

* Typical maximum system flow rate (7.5 feet/sec., 2.3 meters/sec.)

** UL rated flow

