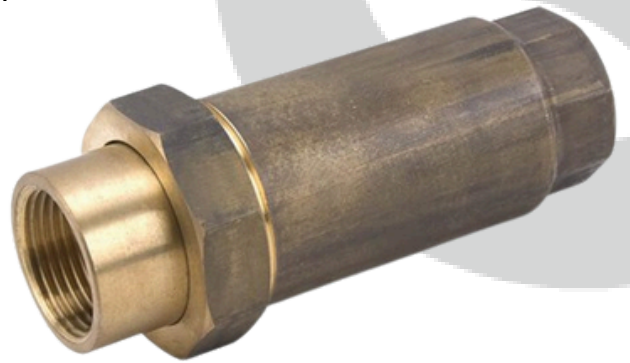


# Dual Check Valve Brass Non Testable with Union

PRODUCT CODE:

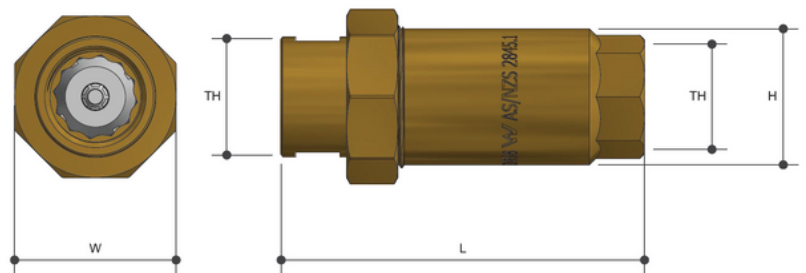
## KEY FEATURES

- Watermark approved
- Double check valve assembly for improved flow compact design
- Protects against backflow and back siphonage
- Suitable for vertical or horizontal installations
- 100% factory tested for sealing operation tested and certified to
- AS/NZS 2845.1



## SPECIFICATIONS

- Working temperature 1°C to 60°C
- Maximum working pressure 1600kPa
- Min. working pressure 60kPa
- Not to be used on hot water installations



## Sizing Chart (MM)

	L	H	W	TH
DOV15LF	99	30	38	Rp 1/2"
DOV15CLF*	99	30	38	Rp 1/2"
DOV20LF	99	44	44	Rp 3/4"
DOV25LF	99	44	44	Rp 1"

\* Chrome Plated